

# Horstead 2023

Monday 15th May - Wednesday 17th May  
**Babbage and Parks**

Wednesday 17th May - Friday 19th May  
**Malorie and Seacole**

# Today...

- An overview of the trip
- Activities we do
- The centre
- Rooms
- Food!
- Pocket money and electronic devices
- Questions

# Day One

- Leave school around 11am
- Arrive at Horstead - 12pm
- Lunch - *packed lunch for home/school*
- Organise rooms/settle in
- ACTIVITY ONE
- Play/relax
- Tea - 6 ish!
- Play/story
- SLEEP...

# Day Two

- Shower
- Make sandwiches for lunch
- Breakfast
- ACTIVITIES 2, 3 and 4 (Lunch)
- Souvenirs
- Play/relax
- BBQ
- Bonfire
- SLEEP!!

# Day Three

- Shower
- Make lunch
- Breakfast
- ACTIVITY 5
- Lunch
- Leave around 12pm
- Arrive back at school
- *Relaxed afternoon at school - pick up as normal!*

# Canoeing



# Raft Building



# Tower





# Bushcraft



# Archery



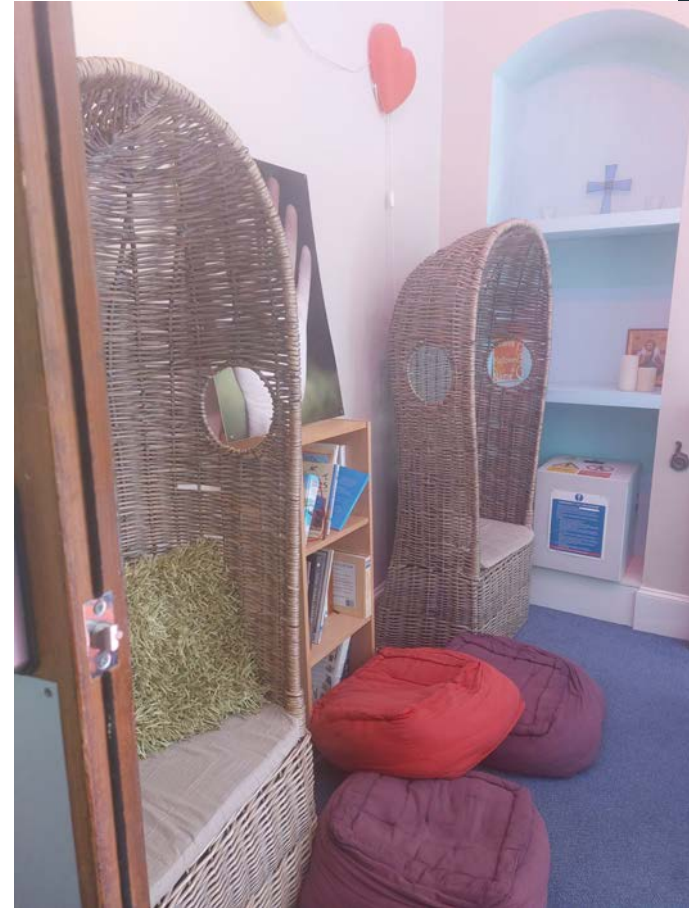
# Bonfire



# BBQ!



# The Centre..











# Rooms

- Boys and girls separate
- 2-14 per room
- Have a choice/ Teachers final say!
- Pillowcase + sleeping bag
- Adults on hand!
- Medicines -
- Administered by staff with permission slips present



# Food!

## Breakfast

A selection of cereals (Cornflakes, Coco pops, Rice Krispies, Weetabix)  
Toast (white and brown) with a selection of jam, marmalade, or marmite  
Fruit (apples)  
Yoghurt  
Orange and apple juice  
Tea and coffee

## Lunch

White or brown bread  
Selection of sandwich fillings (the usuals!)  
Salad  
Fruit  
Crisps  
Homemade cakes



# Food!

Dietary requirements are catered for - this should have been recorded on your medical forms. If not, please contact office ASAP!

Fussy eaters can usually be accommodated too - please contact the office with this too.



# Pocket money and devices

NO ELECTRONIC DEVICES

Pocketmoney = £5 max

Any questions?

# Answers...

- The children are NOT to bring any electronic equipment
- NAMED disposable cameras are fine
- They are welcome to bring a cuddly toy (look after it!!!!)
- They can have a MAXIMUM of £5 to spend at the 'gift shop' - they must put what they buy straight into their bag
- A pillowcase (NOT pillow itself) and a sleeping bag are required - they do have mattresses to sleep on :)
- They will definitely have friends in their room
- Any 'fussy' eaters can be accommodated - just let us know in advance.
- Medicine should be handed to the office - named and with medical admin forms completed